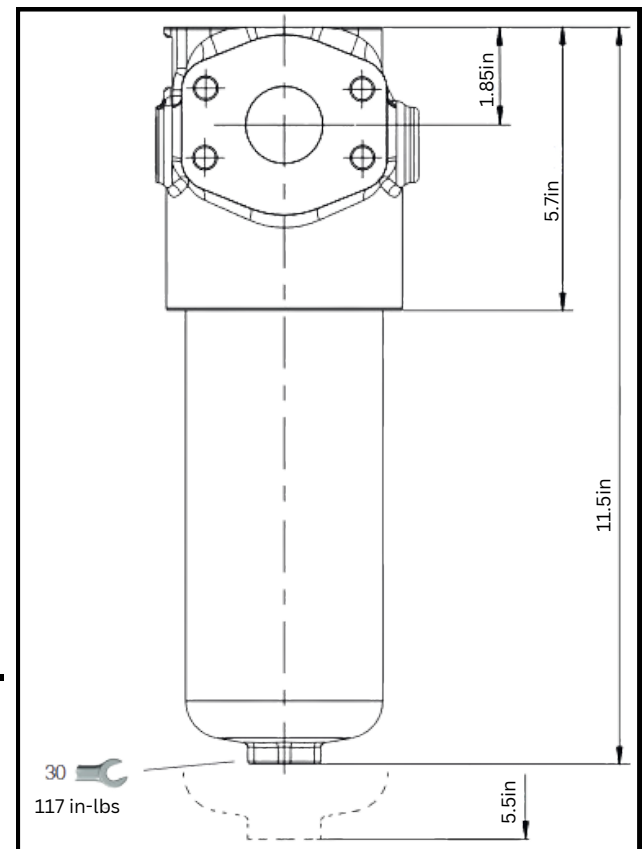
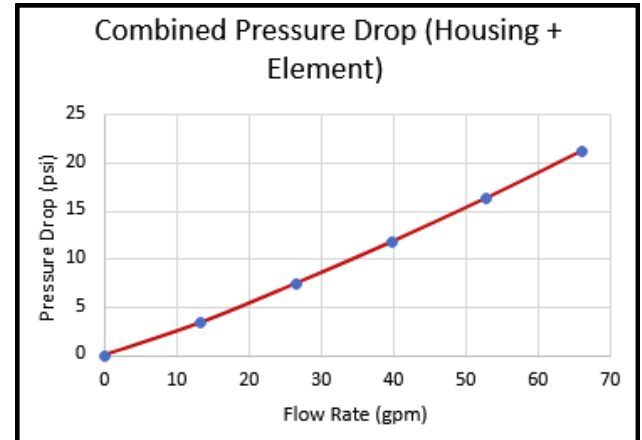


## Filter Specifications:

- **Filter Housing Length With Indicator:**  
11.5in
- **Clearance to Change Element:**  
5.5in
- **F+ microfibre filter element**
  - $\beta_{x(c)} > 1000$  - ISO 16889:  
12  $\mu\text{m}$  (c)
- **Port Size:** CD62 SAE 4-bolt flange  
1 1/4"
- **By-Pass valve:**  
By-pass valve with cracking pressure 88 PSI  
(filter element PSH-\*-R with collapse pressure 300PSI)
- **Differential clogging indicator:**  
Electrical indicator w/LED, 73PSI +- 10%

Total  $\Delta p$  = filter head  $\Delta p$  + filter element  $\Delta p$



## Replacement Elements:

(BX=1000)

**BFR30FA03HSP- 5 $\mu\text{m}$  \***  
**BFR60FA03HSP- 7 $\mu\text{m}$**   
**BFR01FA03HSP- 12 $\mu\text{m}$ \***  
**BFR02FA03HSP- 22 $\mu\text{m}$**

\*= normally stocked

Complete Assembly is made of:  
 -Body: BFPR32NSA03HPF  
 -Visual Indicator: BF01L50EDIC  
 -Element: BFR01FA03HSP