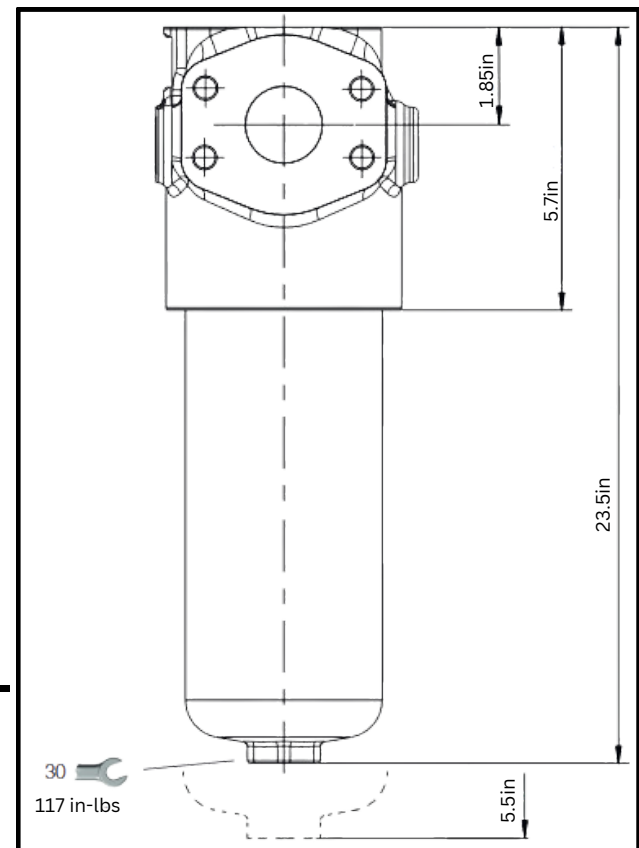
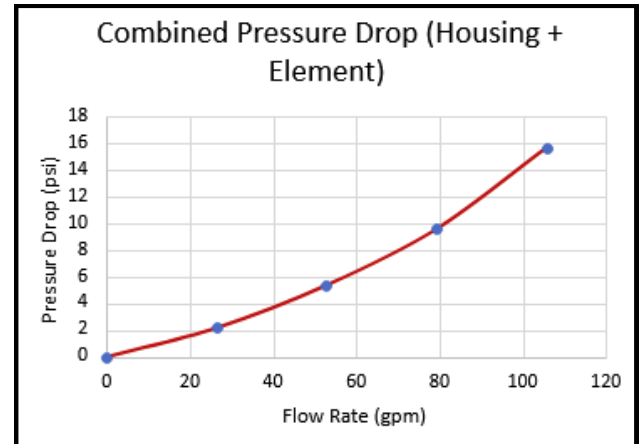


Filter Specifications:

- **Filter Housing Length With Indicator:**
23.55in
- **Clearance to Change Element:**
5.5in
- **F+ microfibre filter element:**
 - $\beta_{x(c)} > 1000$ - ISO 16889
 - 12 μm (c)
- **Port Size:** CD62 SAE 4-bolt flange
1 1/2"
- **By-Pass valve:**
By-pass valve with cracking pressure 88 PSI
(filter element PSH-*-R with collapse pressure 300PSI)
- **Differential clogging indicator:**
Electrical indicator w/LED, 73PSI +- 10%

Total Δp = filter head Δp + filter element Δp



Replacement Elements:

(BX=1000)

BFR30FD03HSP- 5 μm
BFR60FD03HSP- 7 μm
BFR01FD03HSP- 12 μm
BFR02FD03HSP- 22 μm

*= normally stocked

Complete Assembly is made of:
-Body: BFPR42NSD03HPF
-Visual Indicator: BF01L50EDIC
-Element: BFR01FD03HSP