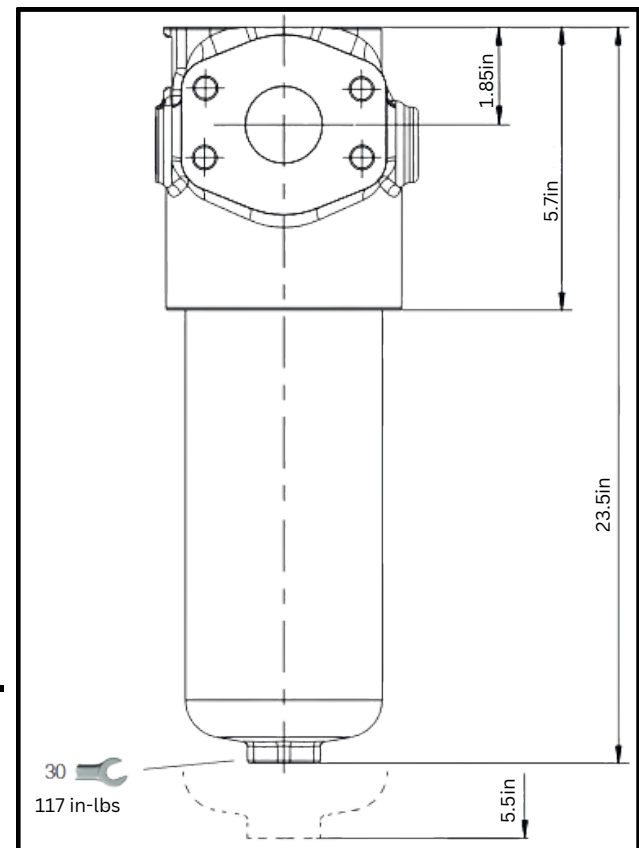
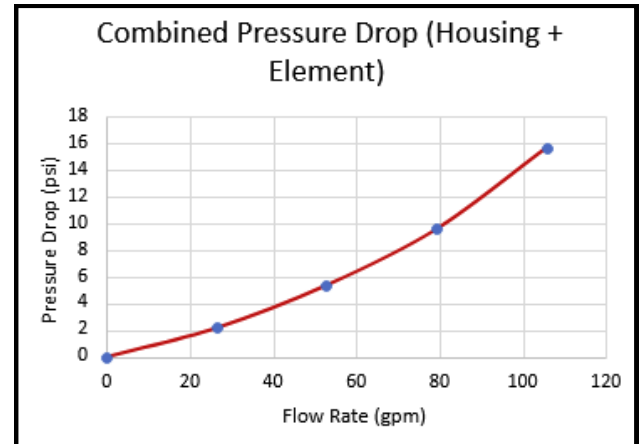


## Filter Specifications:

- **Filter Housing Length With Indicator:**  
23.55in
- **Clearance to Change Element:**  
5.5in
- **F+ microfibre filter element:**
  - $\beta_{x(c)} > 1000$  - ISO 16889
  - 12  $\mu\text{m}$  (c)
- **Port Size:** CD62 SAE 4-bolt flange  
1 1/2"
- **By-Pass valve:**  
By-pass valve with cracking pressure 88 PSI  
(filter element PSH-\*-R with collapse pressure 300PSI)
- **Differential clogging indicator:**  
Visual indicator, 73PSI +/- 10%

Total  $\Delta p$  = filter head  $\Delta p$  + filter element  $\Delta p$



## Replacement Elements:

(BX=1000)

BFR30FD03HSP- 5 $\mu\text{m}$   
 BFR60FD03HSP- 7 $\mu\text{m}$   
 BFR01FD03HSP- 12 $\mu\text{m}$   
 BFR02FD03HSP- 22 $\mu\text{m}$

\*= normally stocked

Complete Assembly is made of:

- Body: BFPR42NSD03HPF
- Visual Indicator: BF0150VDIC
- Element: BFR01FD03HSP